

Nero





DOLCE PULL OUT SINK MIXER

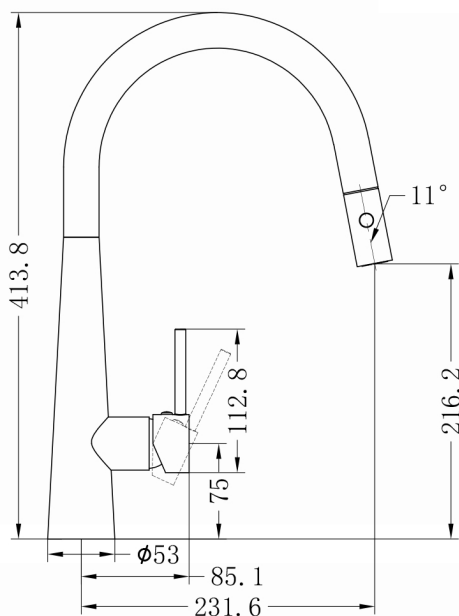


SPECIFICATION

PRODUCT CODE	YSW5810-09C
WELS RATING	5 STAR 6L/MIN
WATERMARK LICENSE	WM-060073
TEMPERATURE RATING	MIN 1°C-MAX 75°C
PRESSURE RATING	MIN 150KPa-MAX 500KPa

FINISH

	NR581009cCH	chrome
	NR581009cMB	matte black
	NR581009cBN	brushed nickel
	NR581009cGM	gun metal



MAINTENANCE AND CARE

All surfaces should be cleaned with mild liquid detergent or soap and water.

Do not use cream cleaners or citrus based cleaning products, as they are abrasive.

Use of unsuitable cleaning agents may damage the surface. Any damage caused in this way will not be covered by warranty.

PACKAGING INCLUDES

- 1x sink mixer
- 2x flexible hose
- 1x installation kit
- 1x counter weight

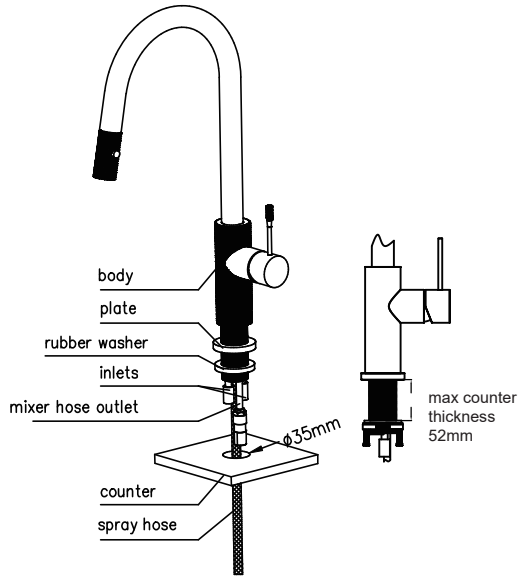
Dimensions are nominal measurements only.



Versions: 2019.12

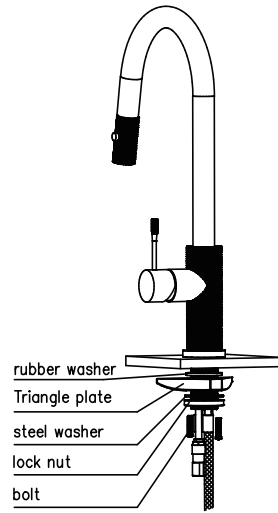
www.nerotapware.com.au

1



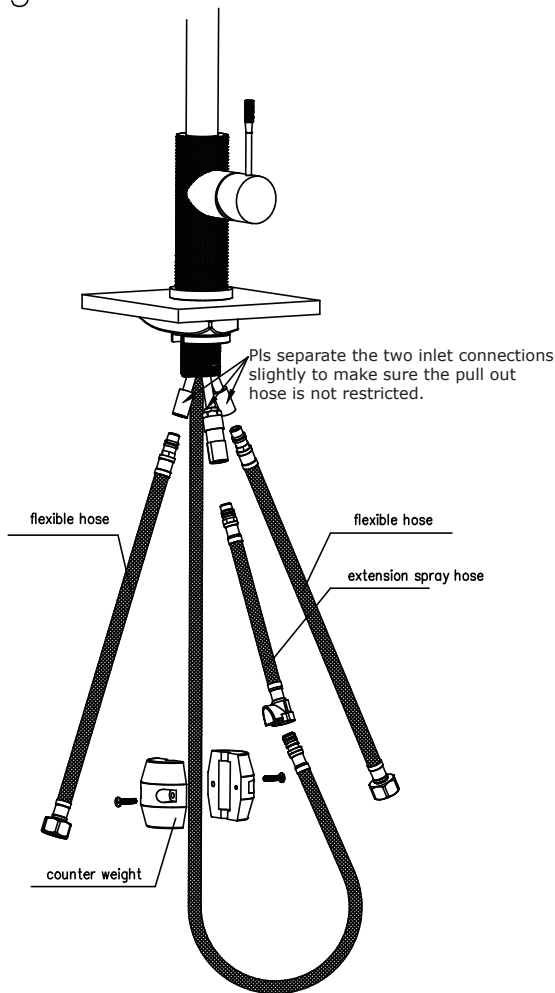
Use a 35mm hole saw cut a hole through the counter.
Remove the lock nut, triangle plate, steel washer. Feed spray hose through the hole and position the mixer over the hole.

2



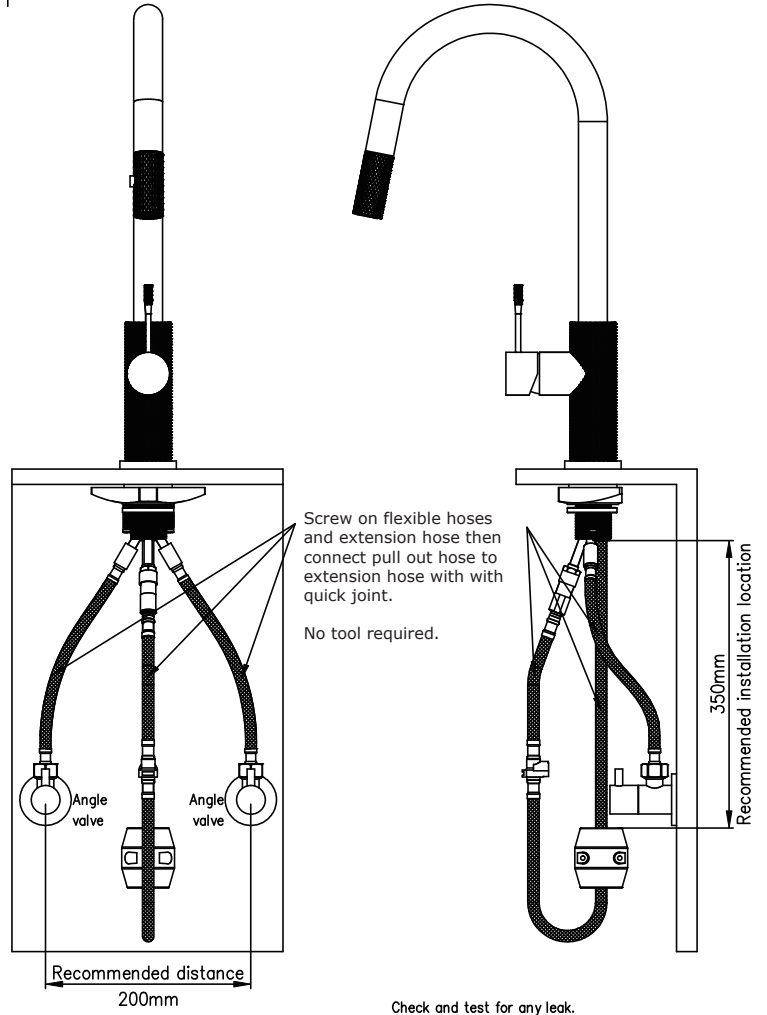
Slide the rubber washer, triangle plate and steel washer and lock nut over spray hose, screw onto thread pipe. Tighten the lock nut firmly and then tighten the 2 bolts on the lock nut firmly as well.

3



Pls separate the two inlet connections slightly to make sure the pull out hose is not restricted.

4



Screw on flexible hoses and extension hose then connect pull out hose to extension hose with quick joint.

No tool required.

Check and test for any leak.